



High Speed WAN Routers

Patton IPLink™ Models 2603, 2621, & 2635

Patton's IPLink WAN Gateway Routers are a complete all-in-one network access device which easily connects your IP/LAN to any T1/E1, X.21, or V.35 network interface.

T1/E1, V.35, or X.21 WAN Interfaces

Get the WAN interface you need in Industry standard connectors

PPP and Frame Relay

Versatile WAN options enable deployment into any network

NAT/NAPT, Firewall, DHCP

Powerful routing features make shared Internet connectivity simple and secure.

10/100 Ethernet with MDI-X

Easily connect to any computer or LAN – the built-in communication crossover switch eliminates messy configuration cables.

WWW/SNMP Manageable

Built-in VT-100 console port makes setup a snap, and you can use the embedded HTTP/SNMP agent to manage the IPLink routers from anywhere in the world.

The Models 2603, 2621, and 2635 Gateway Routers are the ideal solution for connecting any small to medium enterprise or remote office to an IP/Internet network using standard telco and WAN interfaces.

Combining ease-of-use with a full suite of LAN/WAN routing features, the IPLink routers provide selectable bridging or routing functionality along with advanced IP features such as NAT/NAPT, Firewall, and DHCP. A complete set of configurable FR/PPP/IP WAN protocols allow a wide range of choices when connecting branches via common WAN services. The IPLink Routers boast easy installation offering Console/VT-100, Telnet, and HTTP/SNMP management options.

All IPLink routers come with an auto-sensing full-duplex 10/100Base-T Ethernet port, cross-over switch, and internal power supply. The Model 2603 is equipped with an integrated T1/E1 CSU/DSU for connection to full and fractional T1/E1 services. The Model 2621 is equipped with an X.21 interface, and the Model 2635 comes with a V.35 interface.

Patton's new series of high-speed routers offer the versatility and reliability demanded for business-class applications at the most affordable price.

Visit www.patton.com for more information.



Model 2635 – V.35 Interface



Model 2621 – X.21 Interface



Model 2603 – T1/E1 Interface

Interface Options



IPLink Gateway Router

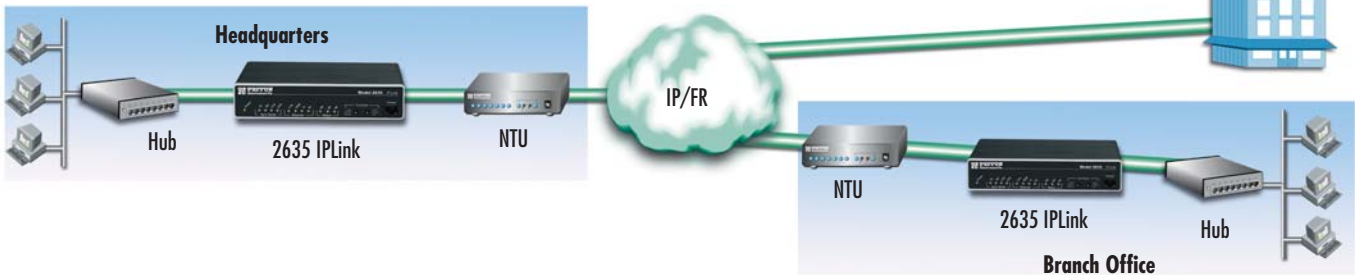
Why use our IPLink Series Routers?

Patton's IPLink Gateway routers deliver all the advanced features for secure, reliable, and high speed Internet data connections. They combine ease-of-use with powerful data routing to make shared Internet connectivity simple and easy.

With NAT support, the IPLink routers offer convenient and economical operation by using a single IP address while the integrated DHCP server automates IP address assignment for connected LAN computers. Security is standard with built-in firewall and violation alerting features that protect the network from would-be intruders.

Available with such standard WAN sync-serial interface as V.35, X.21, T1, E1, the IPLink series gives you the right interface needed for your WAN service.

Patton stands behind our products—we are the only company in the industry offering free configuration support, free technical services, and a minimum one-year warranty on all our products.



Specifications

WAN Interface	2635: V.35-M/34F, 2621: X.21—DB15F, 2603: T1/E1—RJ48C	Security	DoS Detection/protection. Intrusion detection, Logging of session, blocking and intrusion events and Real-Time alerts, Password protected system management with a username/password for console and virtual terminal, Packet filtering firewall for controlled access to and from LAN/WAN. Support for 255 rules in 32 filter sets. 16 individual connection profiles. Access list determining up to 5 hosts/networks which are allowed to access management system SNMP/HTTP/TELNET
Ethernet Connection	Single-port 10/100Base-T switch, auto-sensing, full/half-duplex operation, built-in MDI-X	Indicators	12 LEDs: Power, Link, Loss, Loop, Back-Up WAN signals; Link, TX, RX LAN signals
Management	EIA-561 RJ-45 RS-232, VT-100 CLI, TELNET, Embedded WEB/HTTP, SNMP, Logging or SMTP on events: POST, POST errors, line/DSL, PPP/DHCP, IP MPOA AAL5 and Bridged encapsulation RFC 2684 and RFC 1577 IPoATM. LLC/VC Mux support.	Power Supplies	Internal universal 90–260 VAC input or 48 VDC input.
Protocol	IP (RFC 741), TCP (RFC 793), UDP (RFC 768), ICMP (RFC 950), ARP (RFC 826). IP Router with RIP (RFC 1058), RIPv2 (RFC 2453), Integrated DHCP Server (RFC 2131). Selectable IP leases and MAC/IP pairings. DHCP relay agent (RFC 2132/RFC 1542) with 8 address pools. DNS Relay. IGMP v1 and v2. IP-in-IP (RFC-2003) encapsulation, Ethernet Bridging. NAT/NAPT with integrated application support, MultiNat with 1:1 mapping, Many:1, Many:Many mapping, NAT Port/IP redirection and mapping.	Compliance	FCC Part 15A, CE Mark, EMC Directive 89/336/EEC, Low-Voltage Directive 73/23/EEC, EN60950, EN55022 (CISPR 22). FCC part 68.
		Environment	Temperature: 32–122°F (0–50°C); Humidity: 5–90%, non-condensing
		Dimensions	7.3 x 6.6 x 1.62 in. (185 x 168 x 41 mm)

Model Information

2603/UI	T1/E1 Router with single 10/100 Ethernet and IP Access Feature Set, Internal 90–260 VAC power supply	2621/48	X.21 Router with single 10/100 Ethernet and IP Access Feature Set, Internal -48 VDC power supply
2603/EUI	T1/E1 Router with single 10/100 Ethernet and IP Access Feature Set, External 90–260 VAC power supply	2635/UI	V.35 Router with single 10/100 Ethernet and IP Access Feature Set, Internal 90–260 VAC power supply
2603/48	T1/E1 Router with single 10/100 Ethernet and IP Access Feature Set, Internal -48 VDC power supply	2635/EUI	V.35 Router with single 10/100 Ethernet and IP Access Feature Set, External 90–260 VAC power supply
2621/UI	X.21 Router with single 10/100 Ethernet and IP Access Feature Set, Internal 90–260 VAC power supply	2635/48	V.35 Router with single 10/100 Ethernet and IP Access Feature Set, Internal -48 VDC power supply
2621/EUI	X.21 Router with single 10/100 Ethernet and IP Access Feature Set, External 90–260 VAC power supply		

PE-Inalp Networks Private Ltd

An Associate of

PATTON
Electronics Co., USA

Old No. 14 and New No.6,
Brahadambal Road,
Nungambakkam High Road
Chennai: 600 034, India
Phone **+91 44 45490395/6/7**
Fax **+91 44 4549.0394**
Email **sales@patton.co.in**
Web **www.patton.co.in**

Patton-Inalp Networks AG

PATTON
inalp networks

Meriedweg 7
CH-3172 Niederwangen
Switzerland
Phone **+41 (31) 985 25 25**
Fax **+41 (31) 985 25 26**
E-mail **sales@inalp.com**
Web **www.inalp.com**

Patton Electronics Co.

PE PATTON
Electronics Co.

7622 Rickenbacker Drive
Gaithersburg, Maryland 20879
USA
Phone **+1 301 975 1000**
Fax **+1 301 869 9293**
E-mail **sales@patton.com**
Web **www.patton.com**

07MD2635-DS6

Patton is a registered trademark and IPLink is a trademark of Patton Electronics Company in the United States and other countries.