

## IP ACCESS PRODUCTS

*Patton DMZ Secure Routers streamline DMZ implementation and secure-firewall configurations for enterprise networks without sacrificing QoS for critical business traffic.*

## IPLink Managed VPN Routers

### Model 2823 DMZ Secure Router

Patton's IPLink Managed VPN Routers are a family of next generation appliances that address both the security and the traffic prioritization needs of enterprises. The Model 2823 Secure DMZ Router with integrated QoS makes it easy for enterprises to isolate their web servers in a secure demilitarized zone (DMZ). The three-port router provides physically and logically separates connections to a private LAN and a DMZ network, while still allowing secure business-class Internet access with traffic-shaping services.

As with all IPLink VPN Router, the SecureDMZ Router implements a comprehensive security environment. It all starts with IPsec. By supporting ESP as well as AH, IPLink VPN Routers provide data integrity, authentication, anti-replay and data confidentiality to any traffic flow. DES, 3DES, and AES provide standard encryption up to 256 bits. Firewall capabilities of the IPLink VPN Routers include Access Control Lists (ACLs), IP address and port filtering, and protection against Denial of Service (DoS) attacks. Likewise, PPPoE protocols include support for PAP and CHAP authentication.

QoS features include ToS/DiffServ marking and the configuration of eight service class tags per IEEE 802.1p/Q. With traffic scheduling and shaping, create dedicated bandwidth guarantees, configurable burst tolerance, and policing to include excess traffic discard. IP fragmentation is configurable to help minimize jitter in traffic flows.

Advanced IP features include RIPv1 & RIPv2 routing and static route configuration. Static and dynamic NAT, NAT, NAT, DNS resolver and relay, dynamic DNS, and DHCP server further add to the capabilities of the IPLink VPN Router. All IPLink VPN routers can be managed via a web browser (HTTP), command line interface (Telnet), or an SNMP management platform.

For more information, visit us at [www.patton.com](http://www.patton.com).

#### Triple-Port Power DMZ

*Use to configure the 3rd 10/100 Ethernet port as a physical and logical DMZ to keep traffic off the local network.*

#### VPN Tunnels

*Standard IPsec with AH and ESP ensures maximum protection when traversing unsecured networks.*

#### Strong Encryption

*DES, 3DES, and AES offer standards based encryption algorithms from 56 to 256 bits.*

#### QoS/CoS Profiles

*Configurable burst tolerance, bandwidth guarantees plus reduce per flow traffic jitter as required by the application.*

#### Configurable Security Profiles

*Built-in IP address and IP port filtering, ACLs and DoS attack detection creates a comprehensive security environment.*

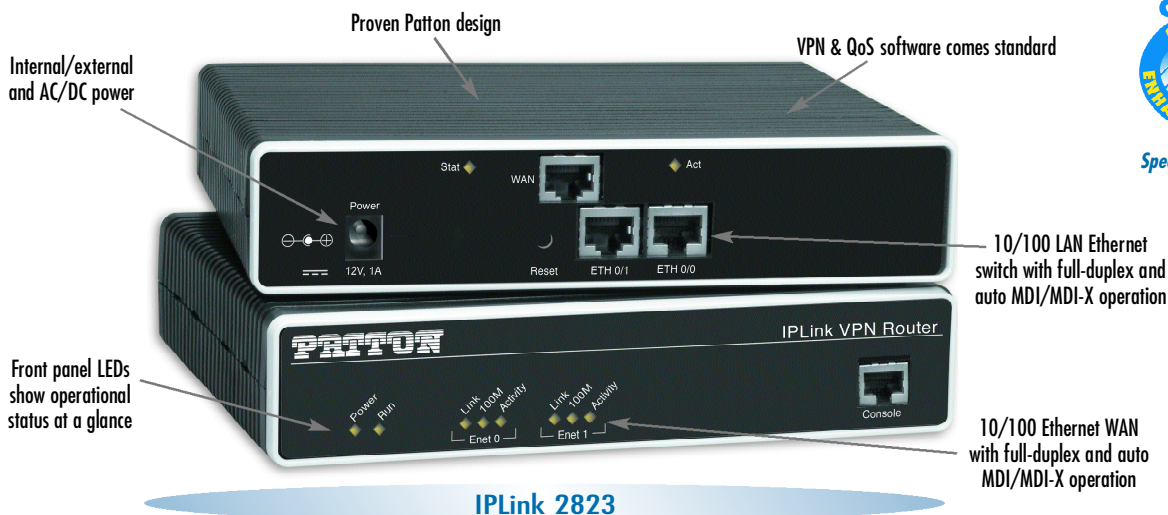
#### Enhanced IP Services

*DNS resolver and relay, NAT/NAPT, dynamic DNS, and DHCP server, eases integration.*

#### SNMP/HTTP Management

*Easily manage the IPLink VPN Routers via a simple web browser interface.*

**PATTON**

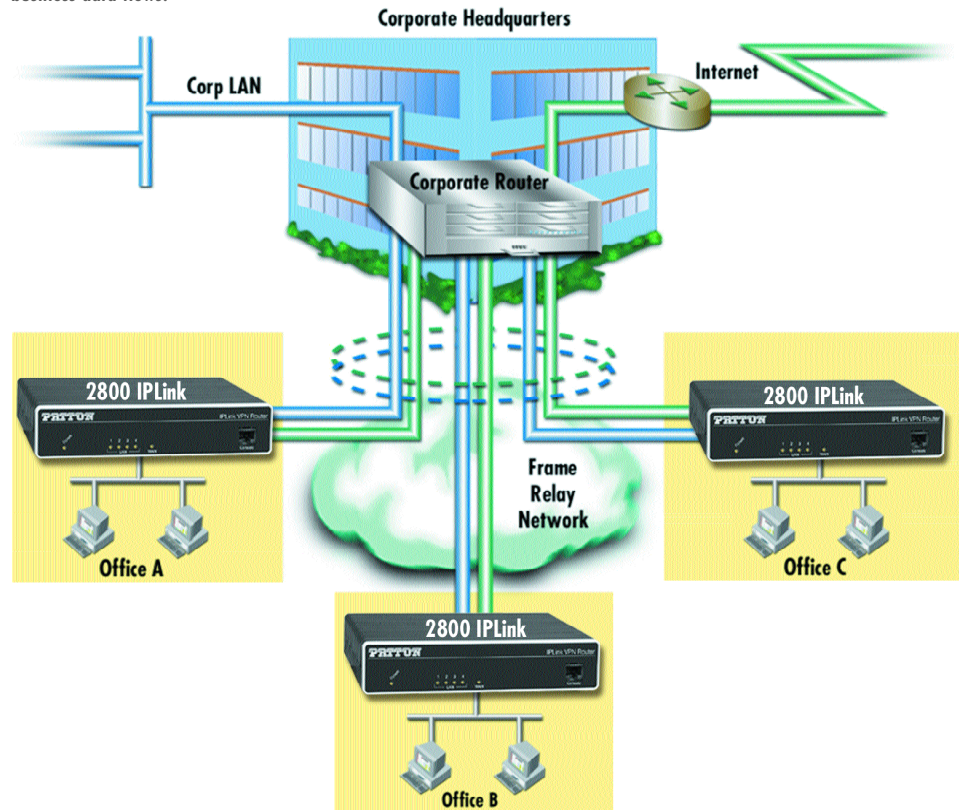


## Features

- ✓ **Three 10/100 Ethernet ports**
  - Easily create a physical and logical DMZ
  - Avoid router configuration complexity
  - Apply QoS to the DMZ to guarantee priority for business traffic flows
- ✓ **VPN tunneling secures IP network traversal.**
  - IPSec encryption supporting AH and ESP provides data integrity, authentication, anti-replay and data confidentiality.
- ✓ **256-bit encryption protects data.**
  - With support for DES, 3DES, and AES, data can be encrypted using 56 to 256-bit algorithms, right-sizing security to resources.
- ✓ **QoS/CoS profiles**
  - QoS/CoS guarantees traffic priority.
  - ToS/DiffServ labeling
  - Eight service class tags per IEEE 802.1p/Q
  - Per flow bandwidth guarantees
  - Hierarchical traffic classes
  - Configurable burst tolerance
  - Excess traffic discard
  - Configurable packet and frame fragmentation to minimize jitter.

## Typical Application

IPLink VPN Routers are next-generation security appliances that address the needs of business users by integrating QoS into a one-box solution. By including QoS, broadband connections can be put to dual-use without impacting the quality of business data flows.



## Specifications

### WAN Ethernet port

10/100BaseT (RJ-45 connector); auto-negotiating; half/full duplex operation with automatic MDI/MDI-X

### LAN Ethernet Ports

One 10/100BaseT port (RJ-45 connector); auto-negotiating; half or full duplex operation with automatic MDI/MDI-X plus One 10BaseT (RJ-45 connector); half or full duplex with automatic MDI/MDI-X

### Management

CLI via Telnet; TFTP for Software upgrade and configuration upload; SNMPv1; HTTP/web browser

### Protocols

IP (RFC 741), TCP (RFC 793), UDP (RFC 768), ICMP & ICMP Redirect (RFC 792), ARP (RFC 826), IP Router with RIPv1 (RFC 1058), RIPv2 (RFC 2453), programmable static routes. Integrated DHCP Server (RFC 2131), DNS Relay (RFC 1631), IEEE 802.1p VLAN Tagging, NAT/NAPT (RFC 1631/2391)

### Security

IPSec including AH and ESP, DES, 3DES, and AES encryption. Access Control Lists (ACLs). IP port and address filtering both by source and destination. DoS Detection. Password protected system

management with a username/password for console and virtual terminal.

### Power Supplies

External universal 90–260 VAC input or 48 VDC input. (Optional Internal universal 90–260 VAC input.)

### Compliance

**CE Mark; Safety:** UL60950-1, CSA 22.2 6095001, IEC/EN60950-1. Universal AC units are US NRTL Listed; **EMC Emissions:** FCC Part 15 Class A; EN55022 Class A; **EMC Immunity:** EN55024

### Environment

Operating temperature: 0-40°C (32-104 °F); Humidity: 5-80% non-condensing

### Dimensions & Weight

7.3W x 1.6H x 6.1D in.  
(18.5H x 4.1W x 15.5D cm)  
30.5 oz./500g (models with internal power);  
24.4 oz./400g (models with external power; no power supply)

## Ordering Information

2823/UI

2823/48

2823/EUI



Meriedweg 7  
CH-3172 Niederwangen  
Phone **+41 (31) 985 25 25**  
Fax **+41 (31) 985 25 26**  
E-mail [sales@inalp.com](mailto:sales@inalp.com)  
URL <http://www.inalp.com>



7622 Rickenbacker Drive  
Gaithersburg, MD 20879 USA  
Phone **+1-301-975-1000**  
Fax **+1-301-869-9293**  
E-mail [sales@patton.com](mailto:sales@patton.com)  
URL <http://www.patton.com>