



Multiport Asynchronous Statistical Multiplexer

Model 3038

The Model 3038 IpStatmux Managed Multiport Asynchronous Multiplexer combines up to eight EIA-232/V.24 interfaces over any composite V.35, X.21, E1/T1 or Ethernet/IP port and offers the lowest-cost, most flexible solution for multiport asynchronous terminal connectivity.

Eight Ports on a Single Link

Multiplex up to eight EIA-232/V.24 ports at 115.2kbps with individually configurable speed, flow control, echo and testing.

E1/T1/X.21/V.35/Ethernet Composite

Connect to any synchronous dedicated WAN or lower costs using standard PPP or Frame Relay networks. Ethernet/IP can be used over any network or Internet without the expense of dedicated lines.

Ethernet/IP Networking

User configurable IP services ensure reliable connectivity to any LAN or WAN. NAT, DHCP and Firewall permits advanced networking and flexibility.

Data Integrity & Encryption

Ensure data with CRC-16 and reliable transport. Data is secure end-to-end using IPSEC with DES/3DES or AES options and auto MDI-X.

Local & Remote Management

Configure and control with Web-based management, SNMP or command line supervisory port all with password protection.

Now it is easier than ever to link up multiple asynchronous terminals, hosts, and devices. Patton's Model 3038 IpStatmux Managed Multiport Asynchronous Multiplexer consolidates up to eight asynchronous data sources onto a single synchronous WAN link or IP/Ethernet LAN connection for secure, reliable, and transparent multiplexing.

The Model 3038 offers advanced network and transmission options. The integrated composite port provides a standard synchronous link connection to NTUs, DSUs or traditional WAN services. By including an Ethernet port as a composite uplink, the Model 3038 also "future proofs" your legacy equipment. Now multiplexed data can use existing LAN, WAN and Internet connections...simultaneously. Data security and service quality is ensured with IPsec encryption as well as packet labeling and integrated data QoS with flow-control.

Reliable data is ensured via multiple CRC-16 checks, transparent data checksums and in-order data delivery. In the event of an error, the Model 3038 automatically retransmits the data to insure transparent and error free delivery. With user configurable flow control including software XON/XOFF, hardware RTS/CTS and combination provides optimal data transfer.

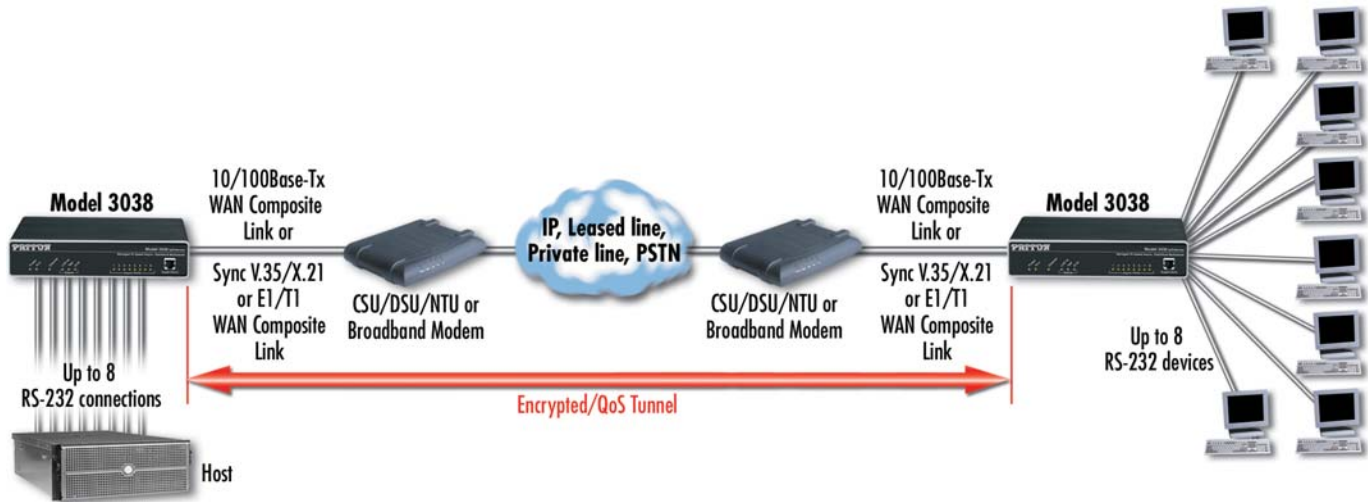
Integrated management offers both local and remote configuration, control and troubleshooting. Use the supervisory port for out-of-band access or use LAN based services such as Telnet, WEB/HTTP and SNMP. Per-port options allow for diagnostics loops, traffic statistics, review channel status and monitor ports and events. Link down, data loss and errors can be signal.

Visit www.patton.com for more information.

- ✓ Compact multiplexer with external universal 90-250 VAC power or 36-72 VDC power options.
- ✓ Front panel status indicators for link, composite and terminal activity.
- ✓ Supervisory port for both local and remote access



Application—Remote Office/Branch Office Voice Extension and Access



Specifications

Terminal/Channel Ports

Serial Asynchronous start-stop • # of Ports: 8 ports (3038); 4 ports (3034) • Max Aggregate Speed: 2Mbps • Interface: CCITT V.24 (EIA-561) on 8-pin RJ-45F • Data Communication Speed: Selectable 50bps-115.2kbps; auto-speed detection up to 115.2kbps • Data Format: Selectable 5,6,7, or 8 bits; 1, 1.5 or 2 stop bits, odd, even, or no parity • Flow Control: Software selectable (XON/XOFF) or hardware (RTS/CTS) in both directions • Break Propagation: Transparent • EIA signal propagation: Status of local DTR signal can be propagated to the remote end • Echo: Character echo can be selectively enabled for each terminal port

Composite Port(s)

Auto-sensing 10/100BaseTX MDI-X

Ethernet/V.35/X.21/ T1/E1 • Error detection and correction: 16-bit CRC-CCITT with ARQ (automatic re-transmission on error) • Speed: Selectable, serial up to 1.2bps-2Mbps, Ethernet auto detect-10/100 • Interface: DB25, V.35; DB15, X.21 • Data Encoding: NRZ or NRZI • Clock: Receive clock: external; Transmit clock: selectable as internal or external

Supervisory Port(s)

Interface Auto-sensing 10/100BaseTX MDI-X on RJ-45 or Serial RS-232 (EIA-561) on RJ-45 • Serial Communication protocol: Asynchronous start-stop • Serial Speed: 300,1200,4800, or 9600 bps • Serial Data format: 7/8 bits, 2 stop bits, odd/even/no parity • Echo: Optional

Commands

Set/modify/view parameters • View status • Store parameters in non-volatile

memory • Copy parameters between ports • Provide local/remote loop backs on port • Establish connection between supervisory and terminal ports • Obtain statistic reports • Unit reset; individual port reset • Remote supervisory access • Enable/Disable remote access

IP Services Supported

IPv4 • RIPv1 and v2 (RFC 1058 and 2453) • ICMP redirect (RFC 792); packet fragmentation • DiffServ/ToS set or queue per header bits • Packet policing discards excess traffic • 802.1p/Q VLAN support with 4096 IDs • IPSEC AH & ESP Modes • Manual/IKE keying • AES/DES/3DES Encryption

IP Connectivity Supported

X.21/V.35 (Frame Relay (8PVCs); RFC1490,FRF.12 fragmentation; LMI, Q993D, ANSI 617D, Gang of Four;

PPP,PAP,CHAP,LCP,IPCP; T1/E1 (ITU-T G.703,ANSI T1.403; AMI, B8ZS, HDB3) • TCPRAW • UDP • Telnet • DHCP • NAT

Operating Environment

Temp.: 0–40°C

Humidity: 5–80% (non condensing)

System

CPU Motorola MPC859 @ 50 MHz • Memory 16MB SDRAM/4MB Flash • Power: 100–240 VAC (50/60 Hz) • Power dissipation: 4W

Compliance

EMC compliance: EN55022 and EN55024

Safety compliance: EN 50950

CE compliance

FCC Part 15 Class A

Model Information

3038A/C/EUI: Managed High-Speed RS-232 Async. 8-port Stat Mux; Composite V.35 Sync

3038A/D/EUI: Managed High-Speed RS-232 Async. 8-port Stat Mux; Composite X.21 Sync

3038A/K/EUI: Managed High-Speed RS-232 Async. 8-port Stat Mux; Composite E1/T1 Sync

3034A/C/EUI: Managed High-Speed RS-232 Async. 4-port Stat Mux; Composite V.35 Sync

3034A/D/EUI: Managed High-Speed RS-232 Async. 4-port Stat Mux; Composite X.21 Sync

3038A/C/EUI-2PK: Managed High-Speed RS-232 Async. 8-port Stat Mux; Composite V.35 Sync

3038A/D/EUI-2PK: Managed High-Speed RS-232 Async. 8-port Stat Mux; Composite X.21 Sync

3038A/K/EUI-2PK: Managed High-Speed RS-232 Async. 8-port Stat Mux; Composite E1/T1 Sync

3034A/C/EUI-2PK: Managed High-Speed RS-232 Async. 4-port Stat Mux; Composite V.35 Sync

3034A/D/EUI-2PK: Managed High-Speed RS-232 Async. 4-port Stat Mux; Composite X.21 Sync

*x = Interface options: C=V.35 (DB-25F), D=X.21 (DB-15F), K=E1 (RJ-48C), T=T1 (RJ4-8C)

** Call for availability.

PE-Inalp Networks Private Ltd

An Associate of

PATTON
Electronics Co., USA

Old No. 14 and New No.6,
Brahadambal Road,
Nungambakkam High Road
Chennai: 600 034, India
Phone **+91 44 45490395/6/7**
Fax **+91 44 4549.0394**
Email **sales@patton.co.in**
Web **www.patton.co.in**

Patton-Inalp Networks AG

PATTON
inalp networks

Meriedweg 7
CH-3172 Niederwangen
Switzerland
Phone **+41 (31) 985 25 25**
Fax **+41 (31) 985 25 26**
E-mail **sales@inalp.com**
Web **www.inalp.com**

Patton Electronics Co.

PATTON
Electronics Co.

7622 Rickenbacker Drive
Gaithersburg, Maryland 20879
USA
Phone **+1 301 975 1000**
Fax **+1 301 869 9293**
E-mail **sales@patton.com**
Web **www.patton.com**

07M3038-DS3

Patton is a registered trademark, and is a trademark of Patton Electronics Company in the United States and other countries.